



Peter Becker Community
Embracing life's treasured moments.

Chit Chat

Campus Programming to Enrich Your Mind Body & Spirit

Residential Living



Inside

Spiritual Connections	2
News & Announcements	3
Birthdays	3
Trips	4-5
Support Groups , Activities, Fitness	5
Volunteer Corner, Green Team	6
Movie Nights & Book Club	7
PBC TV Programming	8

Featured Activities

Mark Your Calendars ... Everyone Welcome

North Penn Singers

Tuesday, May 2 at 7pm in the Chapel

Semi-Annual Memorial Service

Friday, May 5 at 2pm in the Chapel

Joyful Singers

Tuesday, May 9 at 7pm in the Chapel

Mother's Day Tea

Friday, May 12 at 12pm in the Arbor Conference Center
Please see page 4 for details.

Centenarian Event

Friday, May 12 at 2pm in the Orchid Terrace
Celebrate our 100 (+) year olds with Karaoke entertainment by Jan Mohan.

Salford Hills 4th Grade Choir

Monday, May 15 at 2pm in the Chapel

Willow Creek Bluegrass

Thursday, May 18 at 7pm in the Chapel

Lebanon County Youth Chorus

Friday, May 19 at 7pm in the Chapel

Indian Valley Dulcimer Society

Sunday, May 21 at 2pm in the Chapel

PBC Auxiliary Flower Sale

Wednesday, May 10,
10am until sold out
Main Campus and Maplewood
Lobbies
Geraniums \$6.50
each



Mission

Our Mission, based on the Church of the Brethren values of service, integrity, simplicity and love, is to meet the physical, spiritual and emotional needs of all members of the Peter Becker Community.

Chaplain's Corner

By Merlin Hedrick

Discovering Christ in the Stranger

In the post-Easter stories of the Gospels Jesus seems to be on a mission to open the eyes and hearts of his followers to the new ways he will come to them. The Emmaus story tells how Cleopas and his companion invite a stranger into their intimate conversation born out of their grief and then invite him to a shared meal and room for the night. It was only as they broke bread together that their eyes were opened to Jesus before them. **The risen Christ invites us to look for God in those strange people and places that our insecurities and fears tempt us to avoid.** What better way for the risen Christ to shield us from the temptation to make him an idol,

cast in our own image, than to bid us look for him in situations and people that are strange to us. Some of us who attended the Life Learning Conversations: "Understanding Our Muslim Neighbors" sessions have gotten a taste of that. The risen Christ bids us leave our fear and suspicion of others at the empty tomb and risk reaching out to those who confuse, intimidate or infuriate us. **In our choice to approach when we prefer to run the other way we declare "Jesus is Lord of all".** And in our taking risks for love and reconciliation we become our Lord's agents of healing and hope. Will you accept the challenge to discover Christ waiting for you in the stranger?


Resident Led Women's Bible Study Wednesdays at 1:30pm in the Maplewood Club Room.

Neighborhood Bible Study Tuesdays at 10:30am in the Boxwood Conference Room

In Loving *Memory*


Louise Sperber on 3/30/17, age 78

Carmela D'Amore on 4/3/17, age 87

 James L. Flango on 4/3/17, age 72

Dorothy Haas on 4/6/17, age 95

Ruth Corrado on 4/6/17, age 89


 Georgie E. Crede on 4/8/17, age 94


Stella May Schmell on 4/9/17, age 98

Ruth Gombert on 4/10/17 age 96

Claude Grafton on 4/10/17, age 75

Patricia "Pat" Keen on 4/11/17, age 85

 Phillip LaBriola, 4/18/17, age 99

 Alfred "Al" Olson, 4/25/17, age 95



Spiritual Connections

Weekly Chapel Services

Sundays at 10:30am

Also Live on Channel 1979

Semi-Annual Memorial Service

Friday, May 5, 2pm Chapel

Evening Services

with Worship Leaders

7pm in the Chapel

Wednesday, May 3

Indian Creek CoB, Easter Cantata

Wednesday, May 10

Holy Spirit Episcopal Church, Choir

Wednesday, May 17

Fairview Christian Choir, Sherri Clark

Wednesday, May 24

TBA

Wednesday, May 31

First Church of the Brethren, Quakertown

Roman Catholic

Mass/Communion

Wednesday, May 8, 10:45am

Chapel - Led by

Fr. Chung, St. Maria Goretti

Roman Catholic Church

Church Fellowship Hours

Schwenkfelders

Friday, May 12, 2pm

RV Craft Room

Indian Creek COB

Friday, April 21, 2pm

RV Craft Room



News & Announcements

Quarterly Management Meeting
Wednesday, May 31 at 2pm in the Chapel

CHAPLAIN COFFEE TALK

Monday, May 8, 10:30am in the Arbor Conference Center
An informal discussion time with Chaplain Merlin Hedrick. Coffee provided.

SHARING & PRAYER GROUP

Monday, May 22, 10:30am in the Maplewood Magnolia Room
Come to lift up personal and community praises and prayer requests to God. Led by Chaplain Merlin Hedrick.

Spirituality Group

Led by Bob Coble & Merlin Hedrick
Thursdays at 3pm in the Magnolia Room on May 11 and June 8. Each session will feature a video or presentation, followed by discussion. Limited to 15 residents.
The purpose of the group is to provide a safe place to explore how the spirit of God reaches beyond religious categories and doctrines to connect with persons across cultures who desire a divine connection, transcendence and redemption.

Welcome New Residents

Ray & Louise Gehman to WE-E3
Sarah Beyer to RV 253
Jane Clifford to RV 358
Sarah Beyer to RV253

Life Learning Conversations will offer the last in their five-part series of "Understanding Our Muslim Neighbors" on Tuesday, May 9, at 2pm in the Arbor Conference Center. Bachir and Salma Soueidan of Harleysville will return and speak about the similarities Muslims share with Christians and Jews. Do Muslims believe in the Virgin Birth, an Afterlife, the second coming of Jesus, and the Day of Judgement? What do they teach about Abraham, Noah, Moses, and Jesus? These questions and many more will be answered. There will be time for questions and answers.

Living with Spirit Seminar: "Finding Our Spiritual Center in the Second Half of Life"

Wednesday, May 16, 2- 3pm Arbor Conference Center (Refreshments provided)
This 90 minute interactive seminar will explore the unique spiritual challenges, opportunities and resources that are part of the second half of life journey. Led by local pastors James Lapp and Mim Book, we will look at: the different needs and perspectives of the two halves of life, Biblical texts that shed light on this stage of life, and discuss the presented material in table groups with opportunity to offer questions and observations to the presenters and the larger group. For more information call Merlin Hedrick at 215-513-6817.

May

Birthdays

- 1 Ruth Rush
- 3 Margaret Reed
- 5 Arlene Knechel
- 7 Adeline Madden
- 7 Derek Smith
- 10 Mildred Anderson
- 10 Peter Giordano
- 10 Doris Prager
- 14 Barbara Bosler
- 14 Roberta M. McCabe
- 14 Sue Merritt
- 17 Helen Bogle
- 17 Grace Heleniak
- 19 Stuart Dokeray
- 20 Nancy Jenkins
- 20 Esther Schlosser
- 21 Faye Hoffman
- 22 Naomi Bergey
- 22 Carol Dilks
- 23 Glyn Mangum
- 24 Daniel Gallagher
- 24 Jerry Troxel
- 25 Ursula Michel
- 27 Ernest Moyer
- 28 Dorothy Ruth
- 29 Mildred Stoutenburgh
- 29 Faye Wetterau
- 30 Donald Smith
- 30 Betty Lightcap
- 31 Erma Morgan
- 31 Lambert Van Eerden



Trips

Philadelphia Premium Outlets in Limerick

Wednesday, May 10
RVL 9:15am - MWC 9:30am
Free time to shop, lunch at your expense. Activity fee \$5.50. RSVP by May 8.

ROMEO'S

(Retired Old Men Eating Out)

Keystone Diner

Thursday, May 11
MWC 8:45am - RVL 9am
Activity fee is \$3.00, meal at your own expense. RSVP by May 8.

Manna On Main

Tuesday, May 16
RVL 2:45pm - MWC 3pm
Volunteer to serve dinner. a food collection to take along with us. Donations can be dropped off at the reception desk at Maplewood and Main Campus.

Chanticleer Garden

Thursday, May 25
RVL 9am - MWC 9:15am
Free time to tour the garden at your leisure then lunch at the Great American Pub. Activity fee is \$22.50, lunch at your expense.

JULIETS

(Just Us Ladies Interested in Eating Together)

PF Changs

Friday, May 26
MWC 10:45am - RVL 11am
Lunch followed by time to shop at Charming Charlies and Five Below. Activities fee \$4.00, lunch at your expense. RSVP by May 19.

Coventry Mall

Wednesday, May 31
MWC 9:00am - RVL9:15am
Activity fee is \$7.50, lunch at your own expense. RSVP May 26.

Walk and Talk

Starting Monday, May 1
Spring is in full bloom and it's time to enjoy some fresh air! Join Irma for a walk around campus on Mondays at 10am. Meet at Main Campus lobby and walk for about 30 minutes.

Animal Lovers

Montgomery County SPCA

We are currently taking a collection for the Perkiomenville SPCA. Below is a list of items they need. If you prefer to make a monetary donation, please drop it off at a receptionist desk. A trip is scheduled for May 23 at 1pm to drop off donations. Contact Irma at ext 6823 if you would like to join us.

Items requested:

Large, powerful Nyla bones, canned cat food, Laundry detergent, bleach, puzzle toys, biscuits, and snacks.

NEW Activity

Show and Tell

Friday, May 5 and 19th at 10am in the Maplewood Club Room
Join Jeanne Hoff in a stroll down memory lane as she hosts a "Show & Tell" series for grown-ups. Bring a cherished possession and share your fondest memories with friends beginning. Come and join in the fun even if you don't show something at first. Please call Jeanne Hoff at 267-382-0284 for more information.

Bike Share Program

Please see receptionist at main campus or Maplewood Estates to sign one out.

Whack and Roll

Friday, June 2 at 8:45am at the Mennonite Heritage Center
Please contact Irma at ext 6823 by May 5th if you would like to participate in the croquet tournament at the Heritage Center. Find a partner, pick a name for your team and give her a call! Cost is \$30 per team, includes lunch.
9-Wicket Croquet Clinics for teams will be held Sunday afternoons in May at 2pm on the MHC lawn.

Open Fishing

Fridays from 10am - 12pm
Maplewood Pond
Bring your fishing rods and enjoy a couple of hours of relaxation.

Horseshoes - Starts May 9

Tuesdays at 6pm in the Horseshoes Grove
Play or come to cheer your friends on. Bring your lawn chairs. Contact Joe Wilkens at 215-703-0319 with any questions.

Mother's Day Tea

Friday, May 12 at 12pm in the Arbor Conference Center
Contact Irma at ext 6823 if you would like to host a table or sign up as a guest. Hostesses will need to provide a centerpiece, linen, dishes and silverware. Guest fee is \$12.00, meal plan can be used. Hostesses are free. RSVP by May 5. Set up will be on May 11, anytime after 12pm.

All trips are billed on your monthly statement. Contact Irma Burns at 215-513-6823 in Life Enrichment to reserve your seat. Location Key: RVL = Ridgeview Lobby, MWC = Maplewood Center Lobby

GROUPS, CLUBS, CLASSES and THINGS TO DO

Smile-A-While

PBC's Humor Club
Mondays, May 8 & 22
2pm in the Maplewood Club Room
Come exercise with us. Laughter is good exercise for the facial muscles!
Everyone is welcome!

Manicures

Thursday, May 18 at 10am in the Maplewood Craft Room
Supplies are provided.

Adult Creative Coloring

Wednesdays at 10:30am
Ridgeview Craft Room
Colored pencils and books provided.

Crafters

Tuesdays at 1:30pm
Maplewood Craft Room
Make jewelry, crochet, knit or socialize.

Show Me Some Bling

Jewelry Making with Gloria Rich

Tuesday, May 9 & 23
1:30 Maplewood Craft Room
Learn how to make earrings, bracelets or a necklace. Supplies provided.

Mahjong

Wednesdays at 1pm in Seasons Café
Contact PBC resident Sue Merritt at 215-703-4126 if you'd like to learn how to play this very popular game.

Group Piano Lessons

Mondays at 2pm
Contact Shirley Michel at 215-513-3151 for more information.

SUPPORT GROUPS

Veteran's Club

Monday, May 1 at 1:30pm
Arbor Conference Center
PBC resident-author, Jeanne C. Hoff, will encourage you to begin thinking about the legacy you will leave behind for your family, using true stories and information from her book, "*Between Now and Then*," to help you formulate your own personal legacy.

BAYADA

Monday, May 15 at 10am
Arbor Conference Center
Navigating the Hospital Admission Process
Admission versus Observation - Knowing what your Insurance Benefits cover and how to communicate what you want and need after being in the hospital. If you have questions about any of this, please join us for this informative discussion. We hope to answer these questions and many more about how to navigate a hospital stay.

Vision Education and Support

Monday, May 22, at 10am
Arbor Conference Center
Are you struggling to read the newspaper and mail? Are you having trouble reading books and magazines?

Come to hear a representative from PIAT (PA's Initiative For Assistive Technology) speak on many devices that can help. You can even borrow a device to use for a while to try it out! All are welcome!

PBC Computer Club

Friday May 19 at 1:30pm
Arbor Conference Center
We always have a Question & Answer and sharing time on any

computer, tablet, or smart phone related subject that attendees bring up. Feature topic to be announced (watch channel 1979).

Our goal is to share and to help each other somehow manage to survive in the fast changing world of high tech communication and exploding social media.

All residents and friends are invited whether you are a first time user of technology, a long time minimal user for email and internet only, or an experienced full spectrum user.

FITNESS

Wellness Studio and Fitness Class Schedule

Flexibility, balance and strength are the keys to senior health. It's never too late to get started.

Join us at one or all of the classes listed here for fun, fitness and overall good health.

Monday:

2:30pm Chair Exercise - RVF

Tuesday:

11am Tai Chi - WS

1:30pm Chair Exercise - WS

Wednesday:

1pm Jazzercise - WS

2:30pm Chair Exercise - RVF

Thursday:

11am Tai Chi - WS

1:30pm Chair Exercise - WS

Friday:

2:30pm Chair Exercise - RVF

Watch PBC TV for updates or changes.

Location Key

WS - Wellness Studio

RVF - Ridgeview Fitness Room

Please refer to the calendar for the dates, times and locations of all the activities, clubs and meetings.



Community Garden Plot

"God's good earth – Your caring hands"

By George Keck

The Peter Becker Community Garden is available for all residents, families, volunteers, and employees. If you have questions contact George Keck. Phone 215-932-8615. Email: george.keck@comcast.net.

Selecting your area:

In the open garden, rows are about 50 feet long. To allow room for tilling, rows need to be about 36 inches apart. Some folks share a row. Also, we have eight "raised beds" (4x12 ft.) that can be shared. Some folks find it difficult to maintain tall tomato plants in a raised bed. Suggestion: one row in the open garden could be set aside, if needed, just for growing tomatoes for folks in raised beds.

Preparation of the soil:

Someone who is experienced will till the raised beds and open garden area in preparation for planting in May. The tillers, tomato cages, stakes, twine, and a variety of hand tools are available in the small red shed near the garden. They are to be returned to the shed at the end of the season.

What to plant:

Tomatoes, green beans, peppers, beets, squash, kale, lettuce, eggplant, etc. grow well and are the most commonly planted items. Some folks also plant flowers. Only annual plants. No perennial planting (herbs, etc.).

Care of your area:

Caring for your garden is each person's responsibility. Plants need to be watered. Water is available from the two "stand pipes." Hoses also are available. Weeds need to be pulled and placed in the trash area beyond the blackberries. Rows need to be cultivated. Tomatoes need to be supported.

At the end of the growing season:

All dead plants (especially tomatoes, beans, squash, peppers, etc.) must be pulled and placed in the trash area beyond the blackberries. Do not put plants into the compost bins.

PBC Sponsored Little League Phillies

I would like to thank everyone who contributed to our Little League Fund. \$394 was collected on April 6, enough to cover the cost for a year. Jerry Troxel

(The Phillies play at the ballfield on Gruber Road. The schedule is on PBCTV.)

Volunteer Corner

By Janelle Adams

"Volunteers are paid in six figures...

S-M-I-L-E-S." ~Gayla LeMaire

The flower show may be cleaned up and long gone but it is still fresh on our minds. The spring air was brought in right after the last guest left our campus. The Auxiliary, staff and volunteers dedicated hours of hard work to pull off a wonderful event. It is with deep gratitude I thank each one of you for participating in our campus wide event. The flower show is a community event for all ages. Thank you all for lending a helping hand during the preparations and the weekend of the show. The flower show gang volunteers clocked 1,679 hours from mid-January through March. Mark your calendars for Community Day: September 23, 2017. Let the excitement begin.

Just a note to thank all the volunteers & bakers who helped to make the bake sale table a success this year during the flower show from Suzanne Brooke.

May 1, at 9:30am in the Arbor Conference Center & May 18, at 9:30am in the Orchid Terrace
The 7th graders will be here for a writing group. The students will be interviewing our residents, writing about them and doing a presentation. Call Janelle to sign up. The presentation will be June 1. Time TBD.
At Indian Valley Middle School



Movie Nights in May

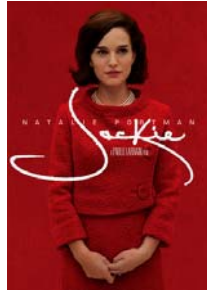
Join Your Neighbors 7pm in the Arbor Conference Center



Mon. the 1st
"La La Land"
 While pursuing showbiz fame, jazz pianist Sebastian falls for aspiring actress Mia, and the two embark on an intense love affair.

But as their separate paths of ambition force them to make tough choices, their relationship starts to fray.

PG-13/Musical/ 2 hrs 8mins



Mon. the 15th
"Jackie"
 Still reeling from her husband's shocking assassination in Dallas, First Lady Jacqueline Kennedy battles through exhaustion,

overwhelming heartache and anger to preserve his legacy -- and to define her own.

Rated R/ Drama based on real life/ 1hr 40 mins



Mon. the 22
"The Notebook"
 Two young lovers are torn apart by war and class differences in the 1940s in this adaptation of Nicholas Sparks' best-selling novel.

Their story is told by a man who, years later, reads from a notebook while he visits a woman in a nursing home.

PG-13/ Romantic Drama/2hrs 3mins



Mon. the 8th
"Hidden Figures"
 In the race to space between the United States and the Soviet Union during the Cold War, three black female mathematicians play

a key role in launching astronaut John Glenn into outer space, making him the first American to orbit Earth.

PG/Drama based on real life/2hrs 7 mins



Sat. the 20th
"There's Something About Mary"

The Farrelly brothers nail the laughs in this hugely popular comedy about a hugely popular girl. Mary is the ideal

girlfriend of every guy she meets, especially frustrated high school suitor Ted ... but he's got plenty of competition.

Rated R/Comedy/1hr 59mins



Feel free to bring your snacks and beverages to enjoy while watching a movie!

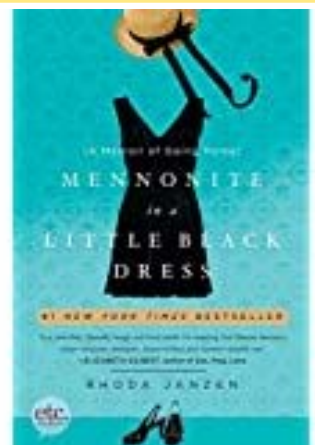
Movies subject to availability.

PBC Book Club

Thursday, May 25, "Mennonite In a Little Black Dress" by Rhoda Janzen

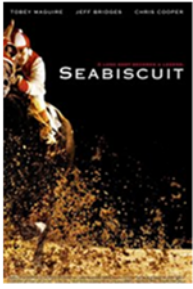
A moving and amusing memoir about a woman who returns home.

Books are available by contacting Mary Reichley 215-723-3288 or George Keck 267-932-8615. You can arrange for a copy through the bookmobile or you may also purchase your own copy. Bookmobile comes to Peter Becker Community the 1st and 3rd Wednesdays of the month at 10:15am, outside Ridgeview Lobby



Movie Matinees

Friday 2pm & Saturday 2pm & 6:30pm



May 5 & 6 - Seabiscuit True story of the undersized Depression-era racehorse whose victories lifted not only the spirits of the team behind it but also those of their nation. PG-13/ 2h20m/ Drama/Biography/Sports/ 2003



May 12 & 13 - Hidden Figures The story of a team of African-American women mathematicians who served a vital role in NASA during the early years of the US space program. PG/ 2h7m/ Drama/ Biography/ History/ 2016



May 19 & 20 - The Pride of the Yankees The story of the life and career of the famed baseball player, Lou Gehrig. NR/ 2h8m/ Biography/ Drama/Romance/ 1943



May 26 & 27 - Memphis Belle In 1943, the crew of a B-17 based in UK prepares for its 25th and last bombing mission over Germany before returning home to the USA. PG-13/ 1h47m/ Action/ Drama/ War/ 1990

Movie Selections are subject to availability. In the event that a movie is not available, a substitute title will air. Movie summaries are from www.imdb.com More information, including content advisories, can be found at this site.

Cable Service Tip

Do You Like Music?

You can turn to Channels 401 thru 450 to listen to all kinds of music.

418 Classic Rock

PBC TV Happenings

Give us 15 minutes And we'll give you the community!

What's Happening on Campus

- ◆ Announcements are scheduled to show every 60 minutes at the top of the hour. This may take up to 15 minutes.
- ◆ Activities and daily menus follow in rotation.
- ◆ Changes in scheduling, promotions and updates are reported to you on the crawl line at the bottom of the screen.

Daily Meal Specials

Seasons Café and Garden View

Daily Audio Broadcast

Each announcement is read aloud.

9 - 10am and 1 - 2pm

Sunday Services

Peter Becker Community Service

Sundays at 10:30am

Live from the Chapel

The following churches provide us with videos of their latest Sunday service:

Indian Creek Church of the Brethren Service

Airs Mondays at 2pm

Zion Mennonite Church Service

Airs Thursdays at 10am

